

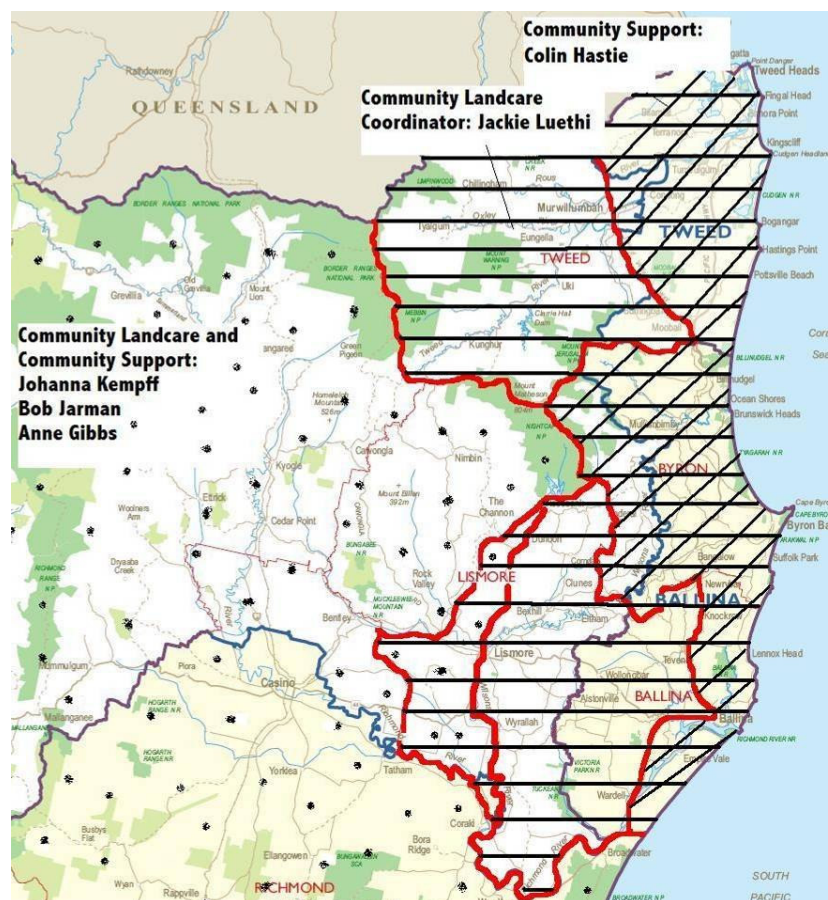
Dear readers, welcome to the first edition of Coastal Landcare News. This monthly newsletter will keep you up to date with Landcare workshops and events, funding opportunities and news in the coastal Landcare area. This is the area that is covered by the Coastal Landcare Community Support Officer (CSO), and encompasses the eastern half of the Tweed Shire, the whole of the Byron Shire and the eastern part of the Ballina Shire.

The map below shows the area covered by the Coastal Landcare CSO (diagonal stripes) as well as the area covered by the Community Landcare Coordinator (CLC), Jackie Luethi (horizontal stripes). Colin Hastie has now replaced Georgia Beyer as the Coastal CSO. This position is funded by the Northern Rivers Catchment Management Authority and is supported by the Byron Shire Council which provides an office space in the Byron Shire Council offices in Mullumbimby. The CSO is employed by Brunswick Valley Landcare but will be working with all groups throughout the coastal area.

The focus of the Coastal CSO will be to provide support and capacity building to coastal communities and groups to better manage their natural resources. This support will include running workshops and assisting groups with their workshops and field days, providing information on best practice, environmental issues and funding opportunities for Landcare and environmental works, and providing advice on managing projects. The CSO will also help to maintain Landcare networks in the area.

Jackie Luethi will be working with landholders to improve the sustainability of farms in the Tweed, Brunswick and Richmond catchments and can assist landholders obtain funding for on-ground works, answer questions about sustainable management practices, weed control techniques and project planning. The CLC position is funded by the National Landcare Programme. Jackie's office is located at Wollongbar Agricultural Institute, phone 02 6626 1329.

If you would like to make contributions to this newsletter, or would like to have your events, working bees or contact details included, please send details to Colin (contact details last page).



What's on

September 2: Regenerating Bitou Infested Dunes at South Golden Beach - Community Information Day, 10am at Fern Beach Entrance

Byron Shire Council is undertaking the regeneration of Bitou infested dunes in Byron Shire with funding from Environmental Trust. The dunes from South Golden Beach to Fern Beach form one project site. The Community Information Day will have a number of activities including weed identification and control, and native plant and bird identification. Light refreshments will be provided. For information contact Zane Nichols 6626 7000 or Sue Bower 6684 9119.

Sunday September 9: Big Scrub Rainforest Day

Big Scrub Rainforest Day, now in its ninth year and will be held at Rocky Creek Dam inland from Byron Bay on Sunday the 9th of September. The celebration starts at 7am with bird watching walks and continues until 4 pm with presentations, workshops, guided walks and performances. For more info www.bigscrubrainforest.org.au

Wednesday September 26: Brunswick Valley Landcare AGM, 7.15pm Pioneer Hall, Gordon Street, Mullumbimby

Saturday and Sunday October 13 & 14: Ewingsdale Open Garden

Australia's Open Garden Scheme is having an open garden at a beautiful property in Ewingsdale that includes an area of regenerated native vegetation. Brunswick Valley Landcare is the designated charity for this Open Garden. More information will be given closer to the event. For info on the scheme see the ABC website <http://www.opengarden.org.au/about.htm>

Saturday 31st May 2008: Brunswick Valley Nature Festival, Shearwater Steiner School, Left Bank Road, Mullumbimby.

Preparations for next year's event are just beginning, more info will be available on the website soon www.brunswickvalleylandcare.org.au

Brunswick Valley Landcare Workshop Program

BVL's monthly workshops are free for members of Landcare/Dunecare groups and by gold coin donation for non-members. For enquiries and bookings phone Colin 6626 7028 or Judy 6684 5390. Upcoming workshops include:

Saturday August 25: Birds of the Brunswick Valley Field Day

West Byron Wetlands 7.30 – 1pm. The Byron Bird Buddies and BVL will be holding a day of events to celebrate the start of the migratory shorebird season. There will be talks, information, displays and bird walks with local bird experts through the award winning wetlands created by Byron Shire Council at the West Byron Sewage Treatment Plant. A great day for learning, socialising and relaxing. Bookings for bird walks needed.

Saturday September 29: Biodiversity in Byron Shire

An overview of the biodiversity values and issues in the Byron Shire and introduction to the Byron Council's new Biodiversity Extension Service.

October (date to be announced): Bushwalk to Boogarem Falls

Members only, bookings required.

Saturday November 24: Melaleuca Wetlands

This workshop will look at the inspiring regeneration works that are being undertaken at a magnificent Melaleuca wetland on private land in the Brunswick Valley.

New Name for World Heritage Areas

One of the State's five World Heritage-listed sites, the Central Eastern Rainforest Reserves of Australia (CERRA) has been re-named Gondwana Rainforests of Australia. Gondwana Rainforests stretch north from the Hunter to South East Queensland. The area includes key national parks such as Mount Warning National Park, Barrington Tops National Park, Dorrigo National Park, Border Ranges National Park and Oxley Wild Rivers National Park plus other reserves and state forests.

NSW State Landcare Awards

By Kerri Francis

Coordinator, NSW Landcare Awards

The Awards dinner is to be held on Friday 26 October in Tamworth. Put this celebration into your diary.

Awards Entries

A reminder that the Award Entries close next week Friday 17th August. I am expecting lots of entries from the winners of CMA regional awards processes. I am looking forward to seeing some great entries from individuals, groups and regions doing fantastic work in NRM.

Awards dinner and ceremony

The Honorable Linda Burney MP and Minister for Volunteerism will be our special guest at the Awards dinner and ceremony. The venue for the Forum and Landcare Awards is the Tamworth Regional Entertainment Centre, just near the Golden Guitar.

Awards judging

A judging panel has been selected. Initial judging will occur in early September, with some on-site visits taking place in 11-21 September. Finalists in each category should be contacted during the last week in September, if everything goes to plan.

Namoi Landscape and Landcare Forum

After a few unfortunate delays the Program and registration details for the Forum and the Landcare Awards should be available through the Namoi CMA website on Thursday 9th August.

If you have any questions please don't hesitate to call me

P: 02 66 270124, F: 02 66 270166

How to choose native plants to replace fleshy-fruited weeds

Invasive species are regarded as second only to habitat loss as a threat to birds in Australia, so new web-based tools to help choose replacement plants for fleshy-fruited weeds will be a welcome relief to our feathered friends.

As weeds greatly modify the habitat of birds via contributing to changes in fire regimes and vegetation structure, altering the quantity, quality and/or seasonal availability of food, and directly ensnaring birds, these web-based tools will be of great use to land managers, restoration practitioners, gardeners, nursery industry personnel and others. These tools have been produced to help in choosing replacement plants for fleshy fruited weeds.

The web-based tools include:

- Two replacement plant factsheets for target weeds - one focused on northeast NSW and south-east Qld and the other on Weeds of National Significance.
- A how-to guide for plant selection based on traits such as fruit size and structure, fruit colour and fruiting season.
- Native plant trait databases. These are provided as Excel spreadsheets, suitable for searching, sorting, extracting data etc by end users. There is a database for NSW, SA, Tasmania, Victoria and south-western WA.

More information: www.weeds.crc.org.au/projects/project_3_2_3_1.html

Contacts, Dr Carl Gosper, carl.gosper@yahoo.com.au

Dr Gabrielle Vivian-Smith, gabrielle.viviansmith@nrw.qld.gov.au, 07 3375 0700.

Funding Opportunities

Exchange Incentive Fund

A small grants fund managed in partnership by Greening Australia's Exchange Service and Land and Water Australia, supported by the Australian Government's Natural Heritage Trust. It aims to help regional practitioners better manage their natural resources by increasing access to current knowledge and research on native vegetation, and generating new knowledge through links to relevant researchers and organisations. Grants of around \$5000 are available (applications for up to \$10,000 will be considered). Applications accepted until the project funds are spent. For more info visit: http://www.lwa.gov.au/Apply_for_Funding/Exchange_Incentive_Fund/indexdl_3694.aspx.

Riparian Management Assistance Program

Applications close 01 October 2007

This program assists property owners to protect, conserve and improve the condition and management of waterways. The aim is to reduce the risk of pollution (pathogens, sediment and nutrients) moving into creeks, streams and ultimately water supply dams.

<http://www2.communitybuilders.nsw.gov.au/funding/3022.html>

Mitre 10 Junior Landcare Grants Program

Schools and organisations that want to involve students in Landcare projects, in conjunction with local Landcare groups, can apply for funding of around \$500 to assist with the costs of the project. Closing dates are: Round 4 – 18th October 2007. For more info on this and other funding opportunities see the National Landcare website www.landcareonline.com.

Carbon Credit Opportunities

The benefits of tree planting for soaking up carbon are becoming recognised in new schemes that can benefit Landcarers. Two projects that may interest you are Greenfleet

www.greenfleet.com.au and CarbonSMART www.carbonsmart.com.au

Contacts

Coastal Landcare Community Support Officer

Colin Hastie (02) 6626 7028, landcare@byron.nsw.gov.au

Brunswick Valley Landcare

Project Officer - Judy MacDonald (02) 6684 5390, judymac@aapt.net.au;

Chair - Adrian Begg adrian_begg@optusnet.com.au

Website www.brunswickvalleylandcare.org.au

Tweed Landcare Inc Network

Claire Masters (02) 6679 3308 clairemasters@limpinwood.net

Website www.tweedlandcare.org.au

Wilsons Creek Landcare

Sue Riley (02) 6684 0283 wilsonscreeklandcare@yahoo.com.au

Website: www.wilsonscreeklandcare.mullum.com.au

The Coastal Landcare Community Support Officer is supported by Brunswick Valley Landcare, Northern Rivers CMA, and Byron Shire Council.

